



... the next level of sound system control

## Advanced software for remote control and monitoring of Powersoft amplifiers:



K Series



M Series with DSP+ETH



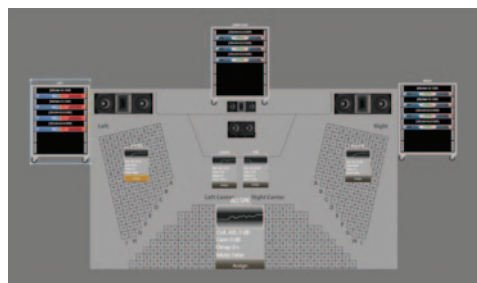
Duecanali



Q & D Series

On-line or off-line system setup and tuning, real-time management and monitoring of all vital functions from a remote PC via a single intuitive graphical user interface.

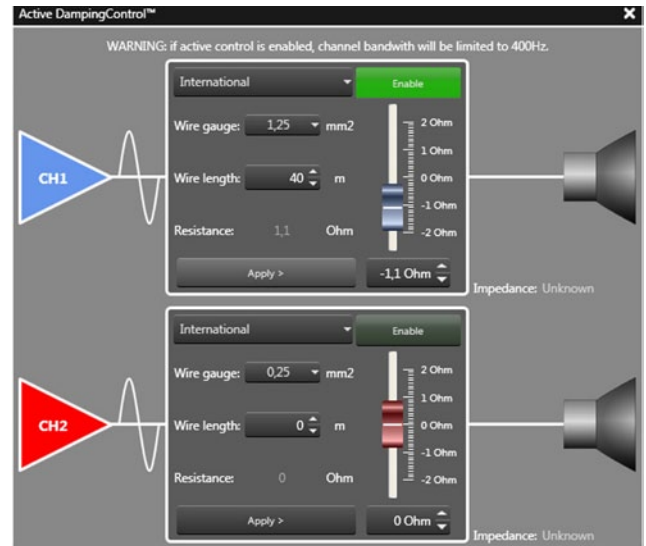
**Active DampingControl™** provides compensation of speaker wire losses, and dramatically improved cone control with a virtually negative output impedance of amplifiers.



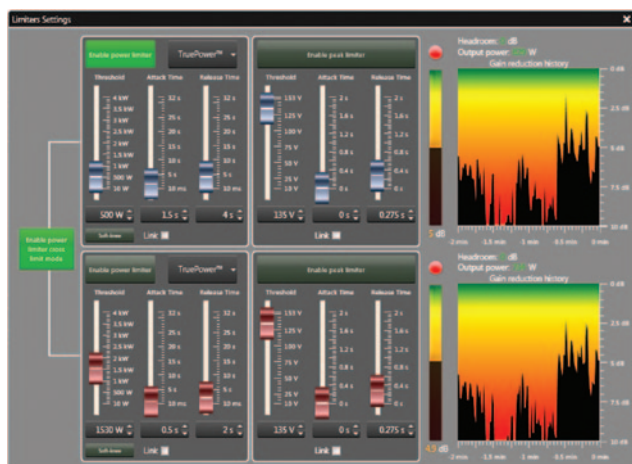
**Armonia** puts the power on your screen and into your hands – exactly what you need, when and where you need it.

With **Armonia**, system designers and operators have new and unique tools to significantly improve sonic performance and system reliability.

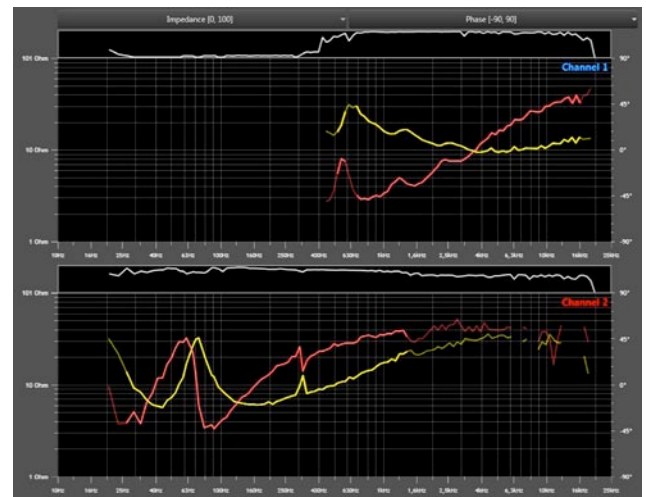
Safeguard your investment into valuable loudspeakers based on 'real world' data: Powersoft's **TruePower™** limiter keeps the amplifier's output power at safe levels depending on the varying load impedance over frequency.



The load's impedance remains visible throughout the show with Powersoft's patented **LevelImpedance™** – at your mouse click, real-time and at real-world power levels – measured with the actual musical signal.



The **Cross Power Limiter** mode helps you preventing unnatural pumping effects e.g. in bi-amped systems by combining the two channels for any active power related limiter: TruePower, Voltage RMS, Current RMS.





... the next level of sound system control

For crossovers and **output EQ's** you choose from **FIR** and **IIR** filters as provided by the KDSP inside K Series and Duecanali amplifiers; time alignment and phase response remain controllable.



The custom FIR filter supports up to 384 taps at 48kHz or 96kHz. Lower frequencies, latency: Linear phase filter and crossover let you stay in control.



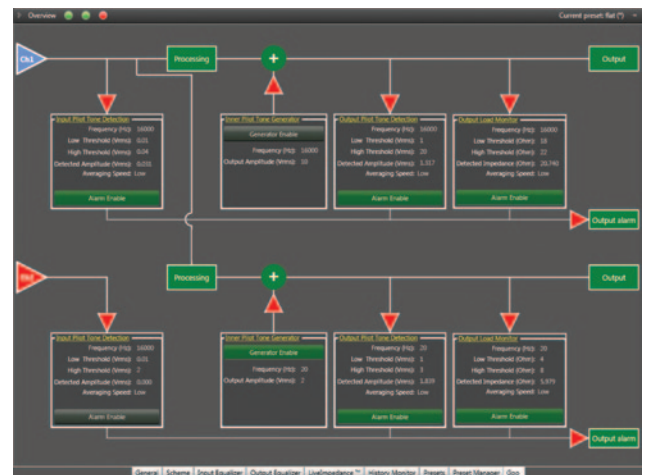
A multi-layered **input EQ** section for individual as well as advanced groups of channels offers you all you need for precise

system tuning depending on venue and your preferences: a large number of filters based on Raised Cosine Equalization is available in all prominent types and shapes. Even complex settings becomes quickly realizable, saving you time and effort for system tuning.

**Armonia's** smart and flexible **Preset Management** makes system setup a breeze, no matter how often you'll need to change configurations in between shows. You decide which part of your presets and system setup you want to lock and protect with a password, or even hide from prying eyes. A comprehensive structure lets you administer accessibility of all parameters – for greater safety, or simply to conceal your 'intellectual audio property'.



In addition to providing real-time feedback on amplifier status, **Armonia** and its **I/O Signal Integrity Monitor\*** will notify you of irregularities due to missing input signal as well as in case of loudspeaker failure.



Effortless without complicated initial measurements, yet genuinely accurate thanks to programmable pilot tone and trigger threshold, the **I/O Signal Integrity Monitor** will raise alarm even if a single loudspeaker as part of a complex system dies, no matter if it is one of multiple lo-Z drivers in parallel, or one of many in a hi-Z 70/100V line.

More **Armonia** features:

- Instant alerts on-screen, per email, and SMS
- Logging of alerts and events
- Advanced grouping for easy management of complex systems
- Sophisticated input EQ for individual channels and groups with multiple layers, various filter types, raised cosine implementation
- Standard network protocols (Ethernet or RS485)
- Easy network setup with daisy-chaining and auto-addressing with Ethernet
- Digital audio (two simultaneous AES3 streams, equivalent to four audio channels) over Cat-5e wiring
- Redundancy per ring architecture
- Dedicated on-line support forum
- Programmable stand-by modes for lower power consumption



Download **Armonia** free from [www.armoniasuite.com](http://www.armoniasuite.com)!

Communication via the serial RS485 port is drastically slower than via AESOP Ethernet, and results in reduced information. Advanced features require KDSP plus KAESOP Ethernet interface. M Series with DSP+ETH: Only basic preset management and equalization. \* = Duecanali Series with DSP+AESOP only.